

PL9225- KL9225

PORTAVALIGIE LATERALE SPECIFICO - SPECIFIC TUBULAR SIDE-CASE HOLDER - PORTE-VALISES LATÉRAUX SPÉCIFIQUE
SPEZIFISCHES STAHLROHR-SEITENTRAEGER - PORTA MALETAS LATERALES ESPECÍFICO - SUPORTE DE MALAS ESPECÍFICO

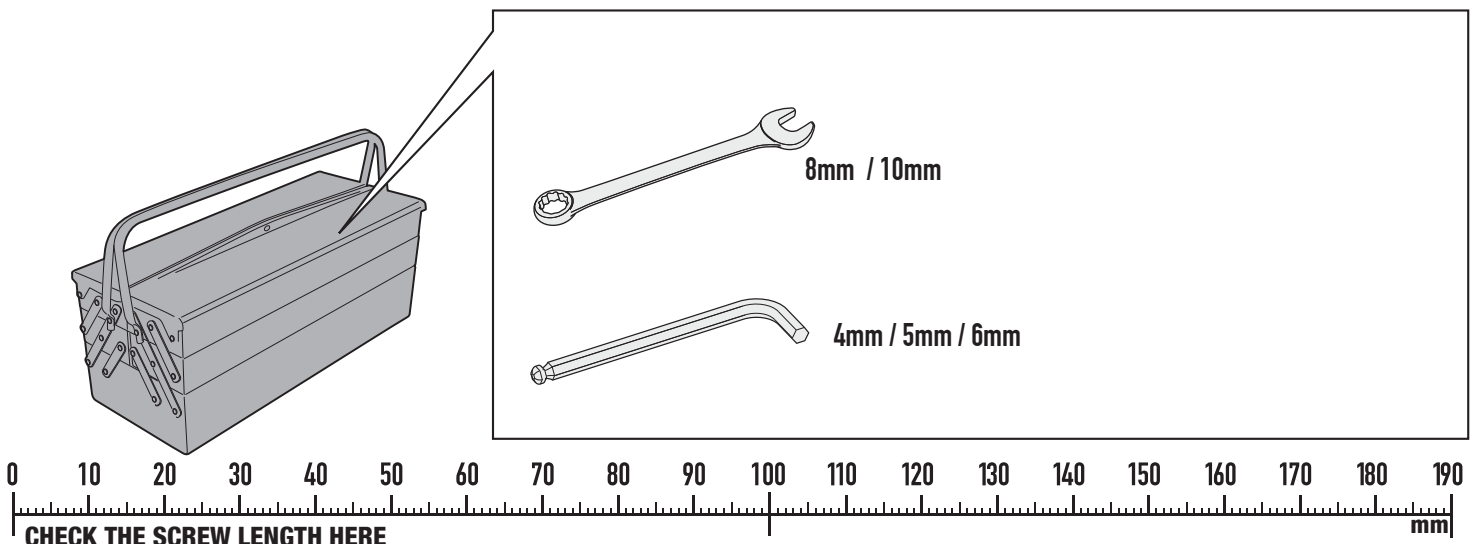
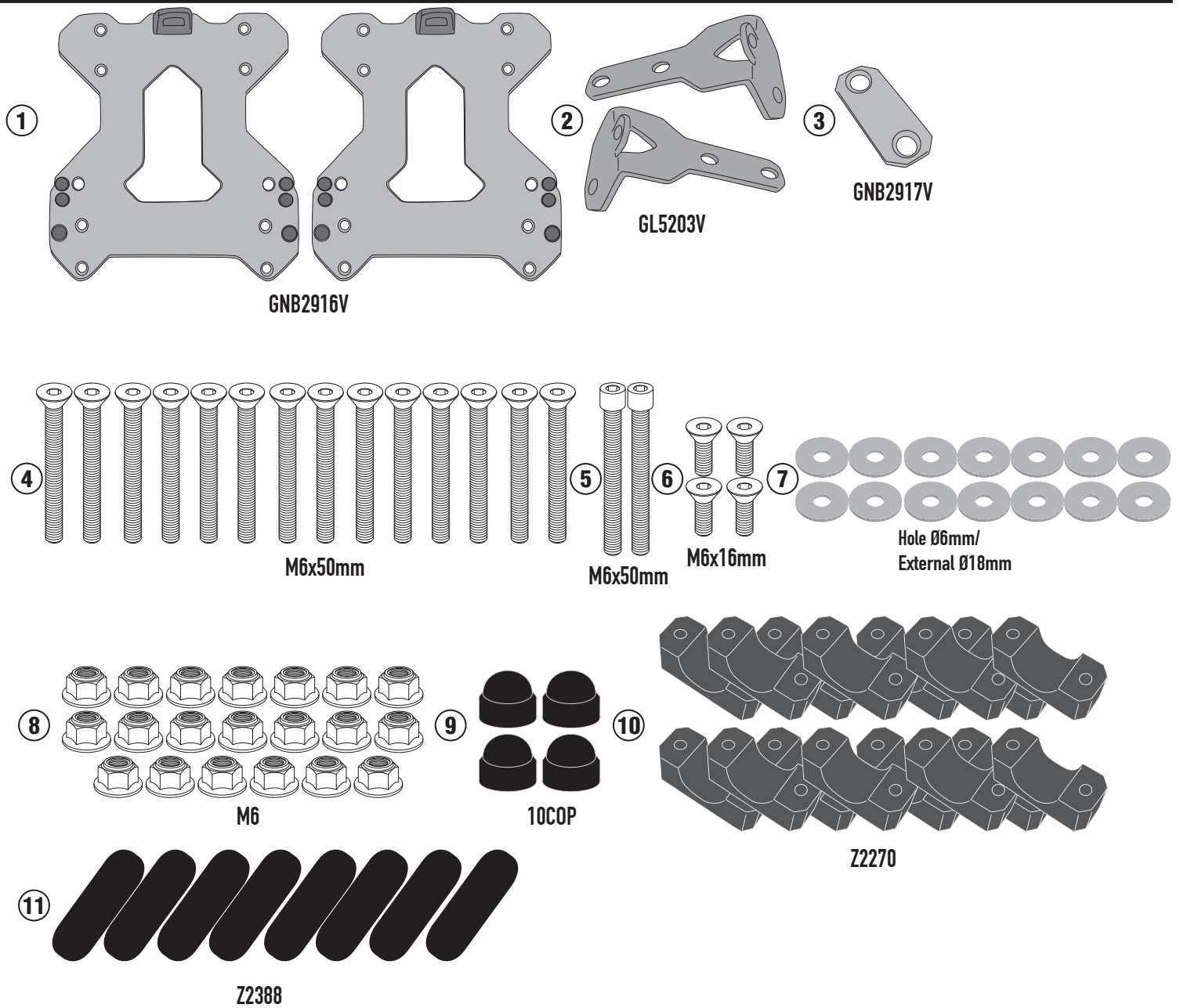
CFMOTO 800MT (2022)

N°	Descrizione/Description	Caratteristiche/Features	Codice/Code	Quantità/Quantity
1	Supporto laterale - Lateral support - Untere Halterung Support latéral - Sopoarte lateral - Suporte lateral	-	GNB2916V	2 (Right: Left)
2	Supporto superiore - Higher Support Support supérieur- Halterung höher Sopoarte superior - Apoio superior	-	GL5203V	2
3	Supporto inferiore - Lower support Support inférieur - Sopoarte inferior Untere Halterung - Suporte inferior	-	GNB2917V	1
4	Vite - Screw - Vis - Schraube Tornillo - Parafuso	TSP M6x50	650TSP	14
5	Vite - Screw - Vis - Schraube Tornillo - Parafuso	TCE M6x50	650TCE	2
6	Vite - Screw - Vis - Schraube Tornillo - Parafuso	TSP M6x16	616TSP	4
7	Rondella - Washer Rondelle - Scheibe Arandela - Arruela	Foro Ø6mm/Esterno Ø18mm	618RON	14
8	Dado - Bolt - Ecrou Mutter - Tuerca - Porca	Dado Autobloccante Flangiato M6 (H9mm)	6DADIAFLN	20
9	Tappo - Cap Fiche - Stecker Enchufe - Capa	-	10COP	4
10	Cavallotto - Retaining clamp - Patte de fixation Abrazadera - Halteklammern - Abraçadeira de fixação	-	Z2270	16
11	Protezione Adesiva - Adhesive Protection Protection Adhesive - Schutzkleber Protección Adhesiva - Proteção Adesiva	-	Z2388	8
12	Componenti Originali - Original Parts Parties Originales - Original Bauteile Componentes Originales - Componentes Originais	-	-	-

PL9225- KL9225

PORTAVALIGIE LATERALE SPECIFICO - SPECIFIC TUBULAR SIDE-CASE HOLDER - PORTE-VALISES LATÉRAUX SPÉCIFIQUE
SPEZIFISCHES STAHLROHR-SEITENTRAEGER - PORTA MALETAS LATERALES ESPECÍFICO - SUPORTE DE MALAS ESPECÍFICO

CFMOTO 800MT (2022)



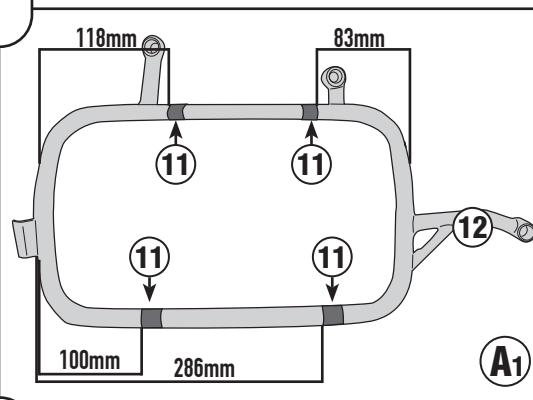
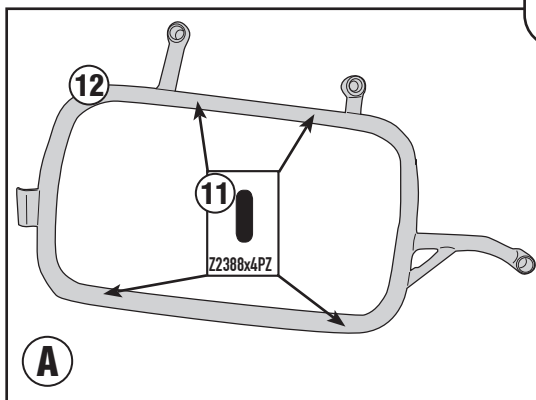
ISTRUZIONI DI MONTAGGIO - MOUNTING INSTRUCTIONS
INSTRUCTIONS DE MONTAGE - BAUANLEITUNG
INSTRUCCIONES DE MONTAJE - INSTRUÇÕES DE MONTAGEM

PL9225- KL9225

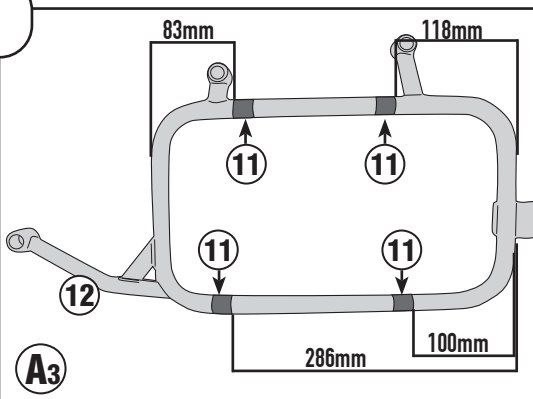
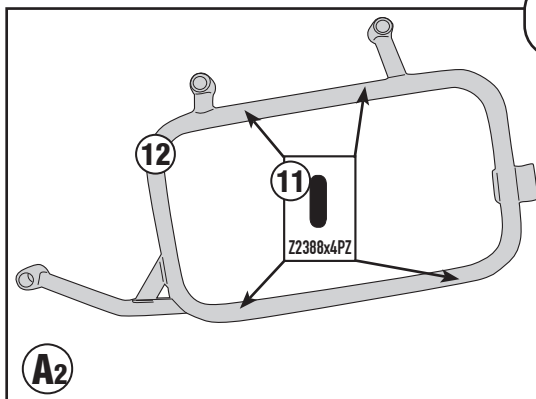
PORTAVALIGIE LATERALE SPECIFICO - SPECIFIC TUBULAR SIDE-CASE HOLDER - PORTE-VALISES LATÉRAUX SPÉCIFIQUE
SPEZIFISCHES STAHLROHR-SEITENTRAEGER - PORTA MALETAS LATERALES ESPECÍFICO - SUPORTE DE MALAS ESPECÍFICO

CFMOTO 800MT (2022)

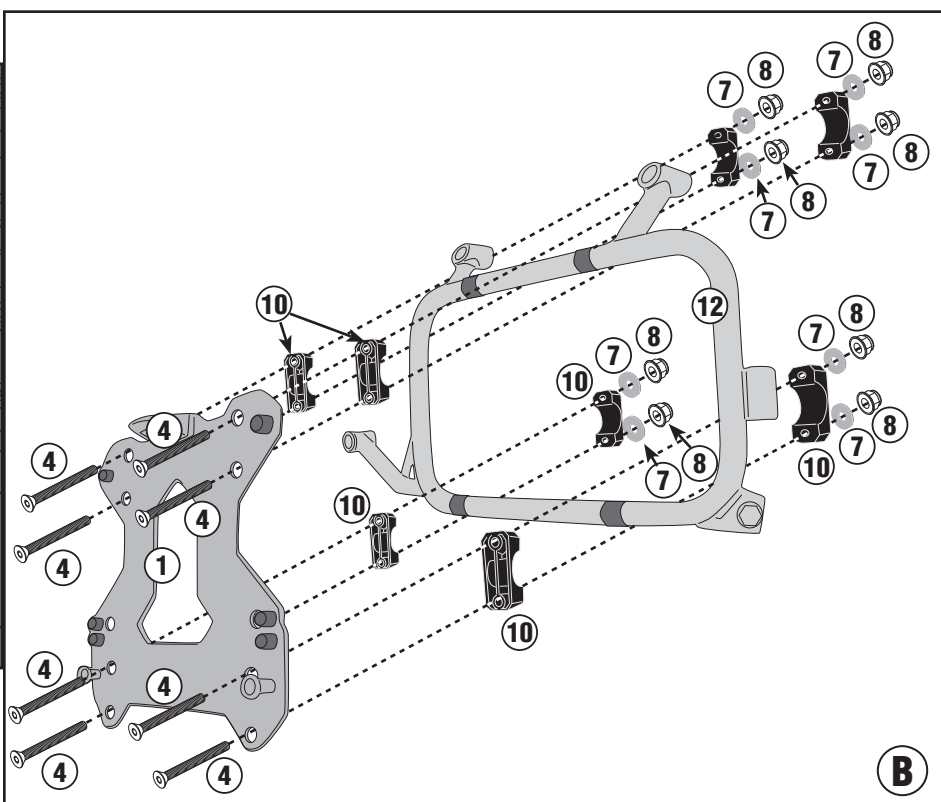
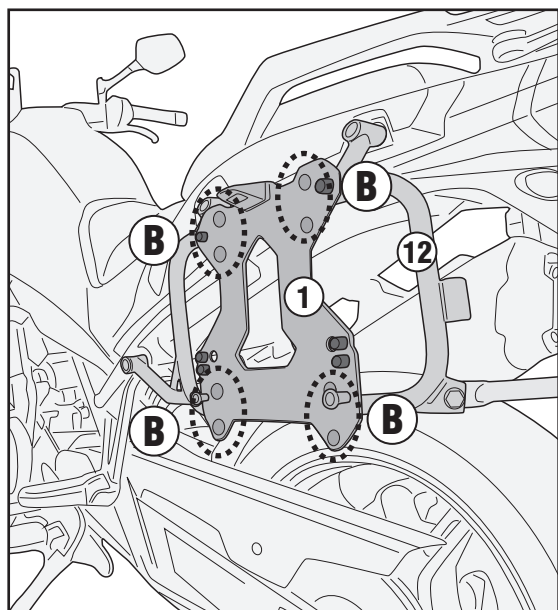
RIGHT SIDE



LEFT SIDE



LEFT SIDE



ISTRUZIONI DI MONTAGGIO - MOUNTING INSTRUCTIONS
INSTRUCTIONS DE MONTAGE - BAUANLEITUNG
INSTRUCCIONES DE MONTAJE - INSTRUÇÕES DE MONTAGEM

PL9225- KL9225

PORTAVALIGIE LATERALE SPECIFICO - SPECIFIC TUBULAR SIDE-CASE HOLDER - PORTE-VALISES LATÉRAUX SPÉCIFIQUE
SPEZIFISCHES STAHLROHR-SEITENTRAEGER - PORTA MALETAS LATERALES ESPECÍFICO - SUPORTE DE MALAS ESPECÍFICO

CFMOTO 800MT (2022)

